

Williwaw Ridge

Additions: Timber Frame Entry,
Covered Deck, Prow,
Hammerbeam Bents

Main: 2609 sq. ft.

Lower: 817 sq. ft.

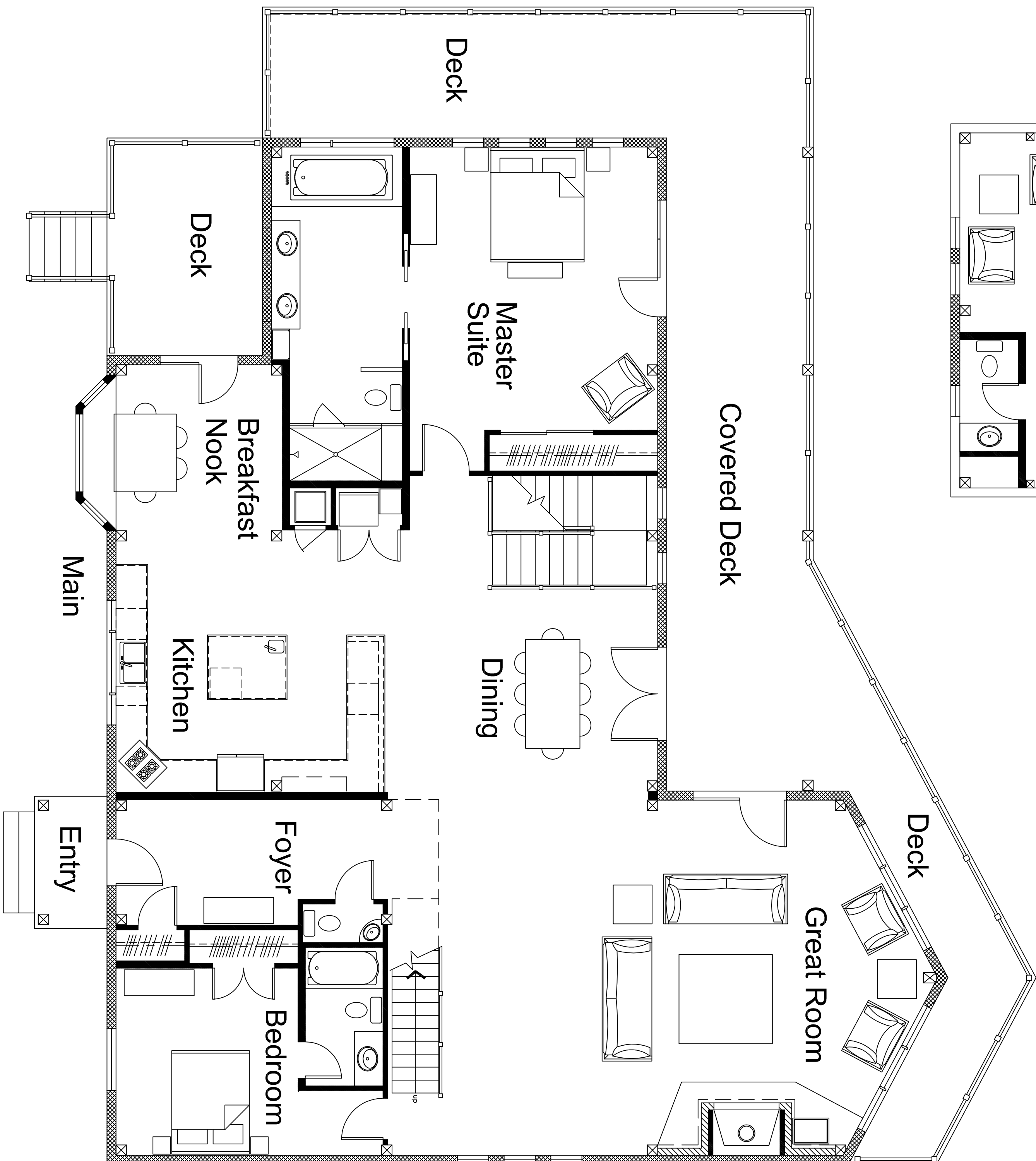
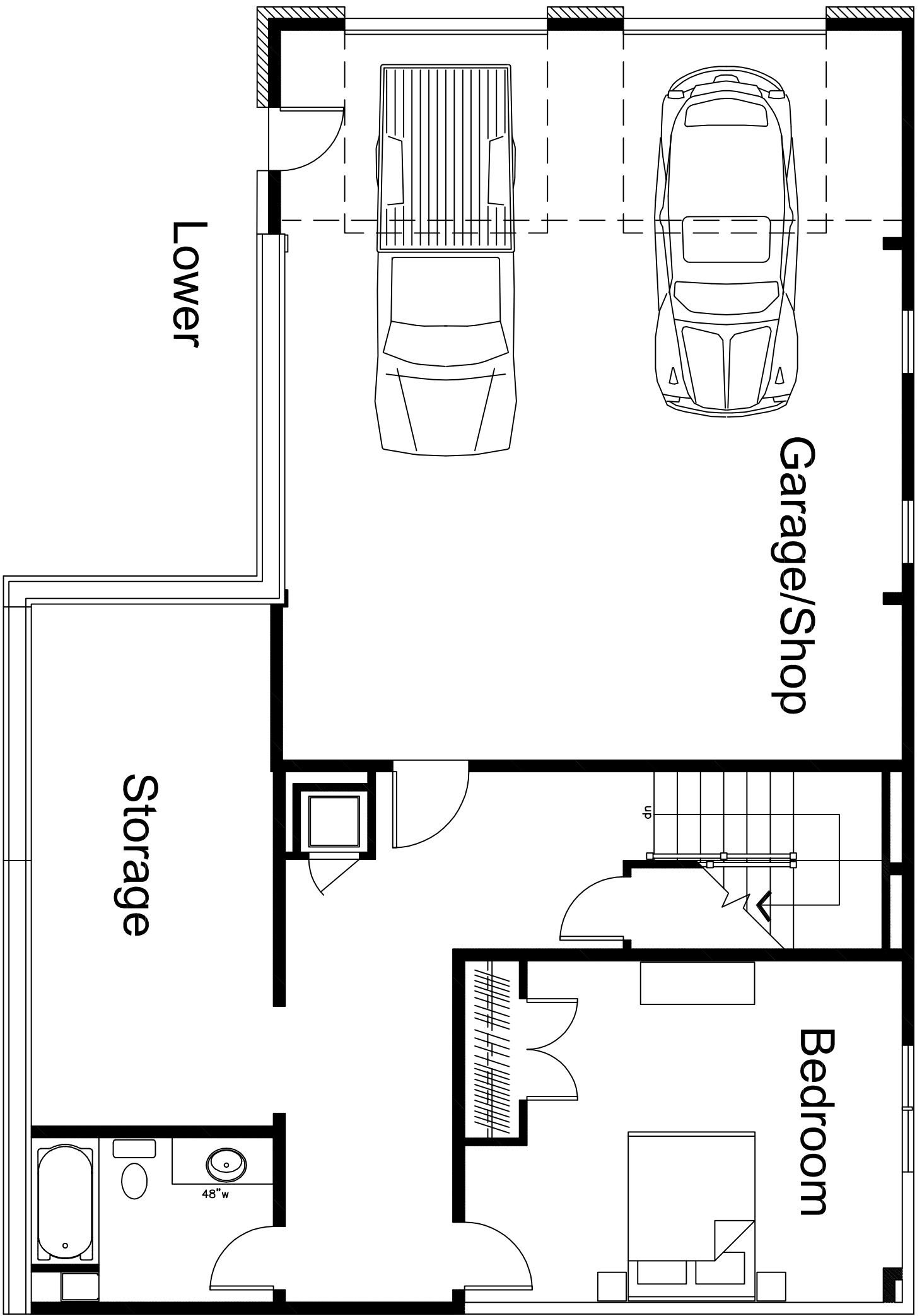
Loft: 542 sq. ft.

Garage/Shop: 755 sq. ft.

Entry: 40 sq. ft.

Decks: 1028 sq. ft.

Total Area: 5791 sq. ft.



Wind River Timberframes

14374 County Road 35.6 | Mancos, Colorado 81328 | 970.882.2112
www.windriver-timberframes.com | alan@windriver-timberframes.com