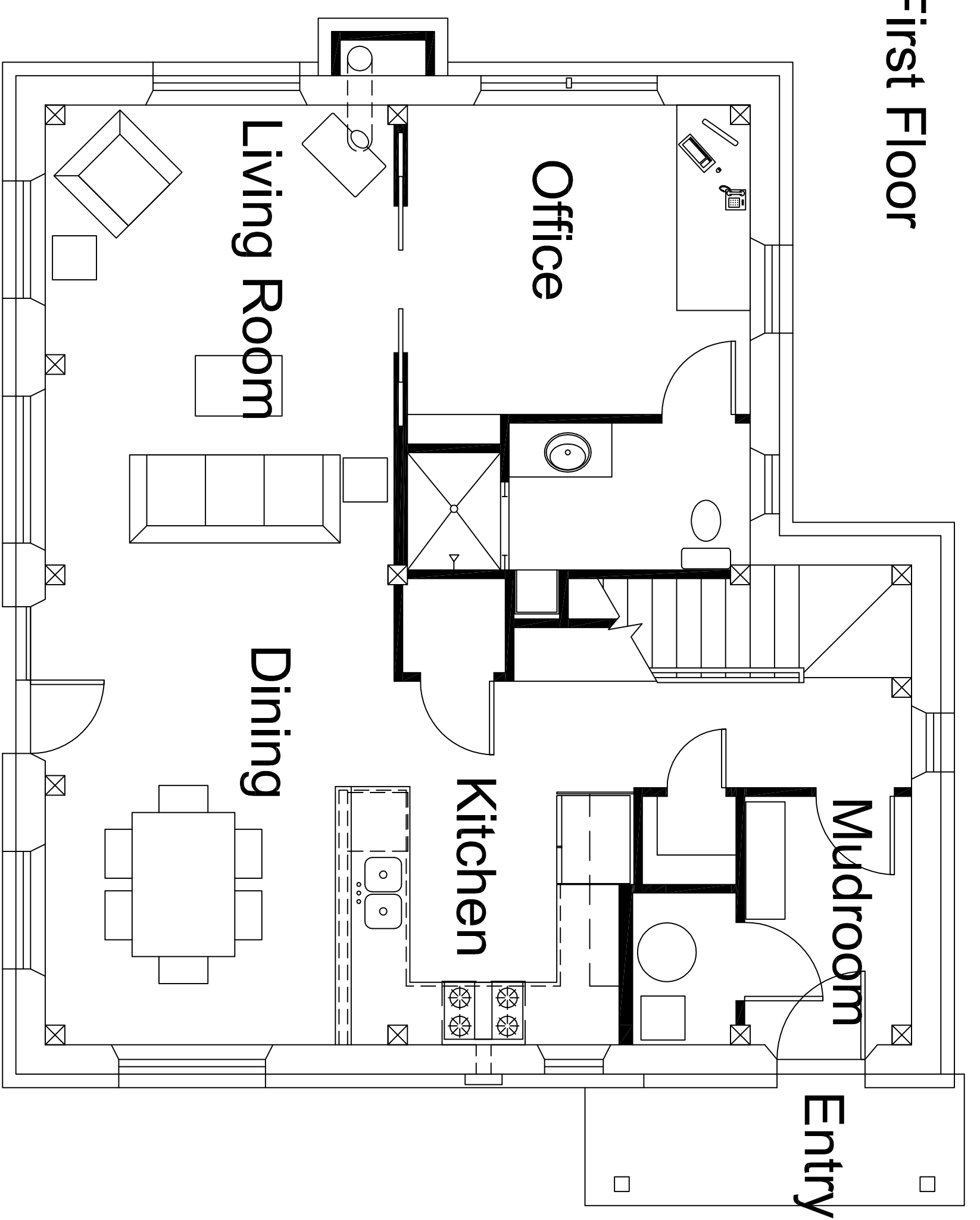
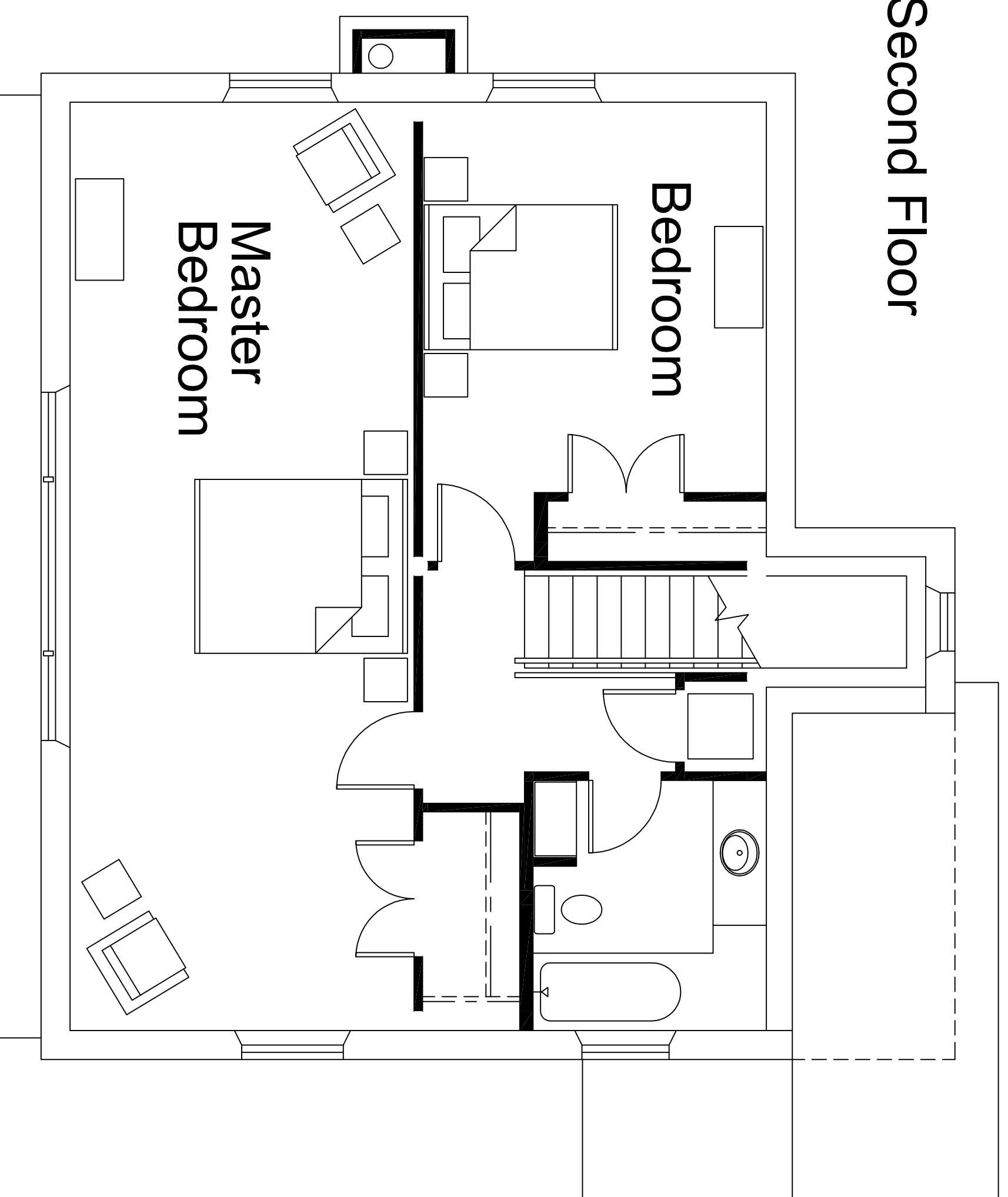


First Floor



Second Floor



Salida

Additions: Shed Dormers
Main: 1045 sq. ft.
Second Floor: 918 sq. ft.
Entry: 51 sq. ft.
Total Area: 2014

Wind River Timberframes

14374 County Road 35.6 | Mancos, Colorado 81328 | 970.882.2112
www.windriver-timberframes.com | [alan @windriver-timberframes.com](mailto:alan@windriver-timberframes.com)