

Mogollon

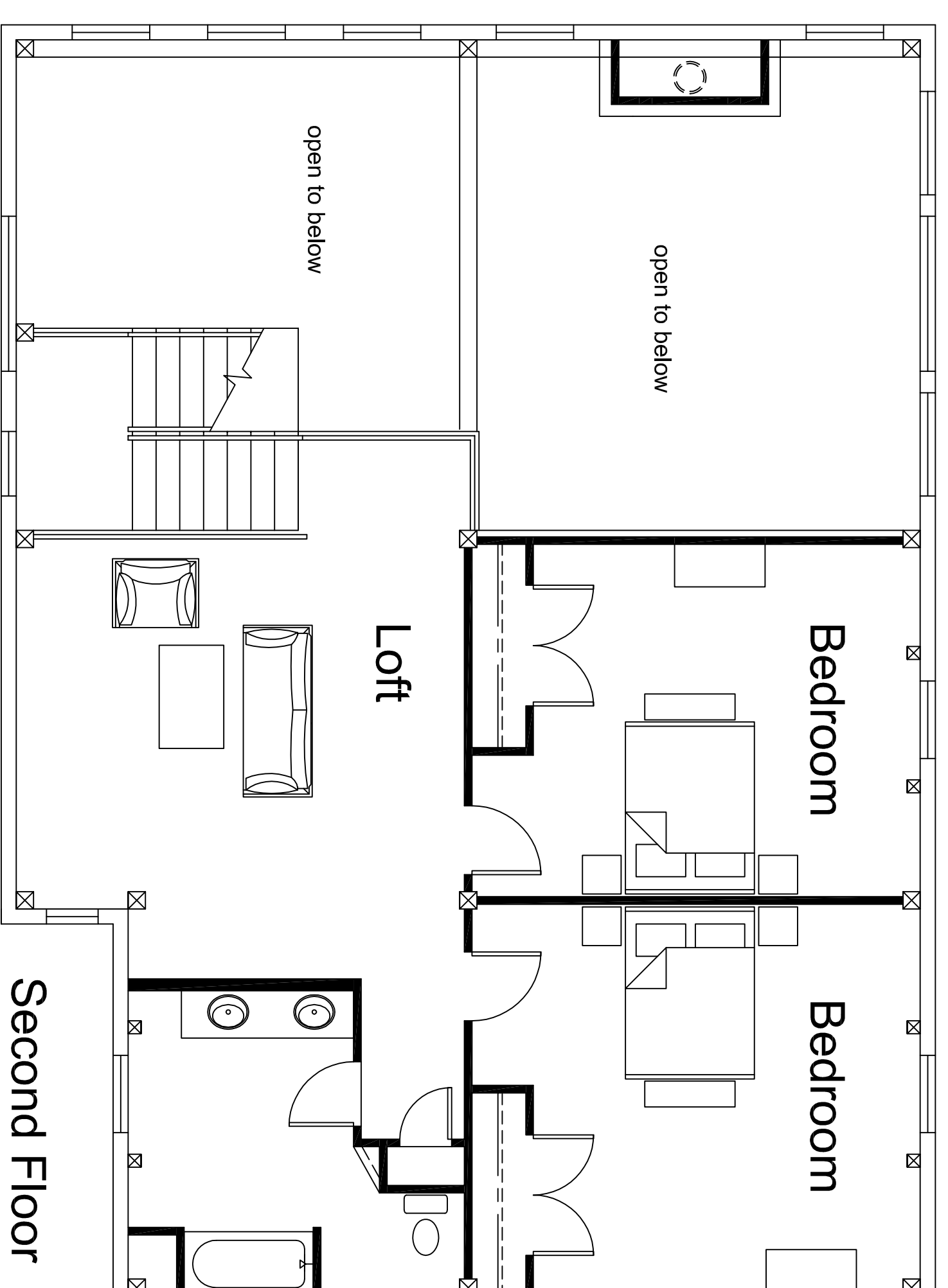
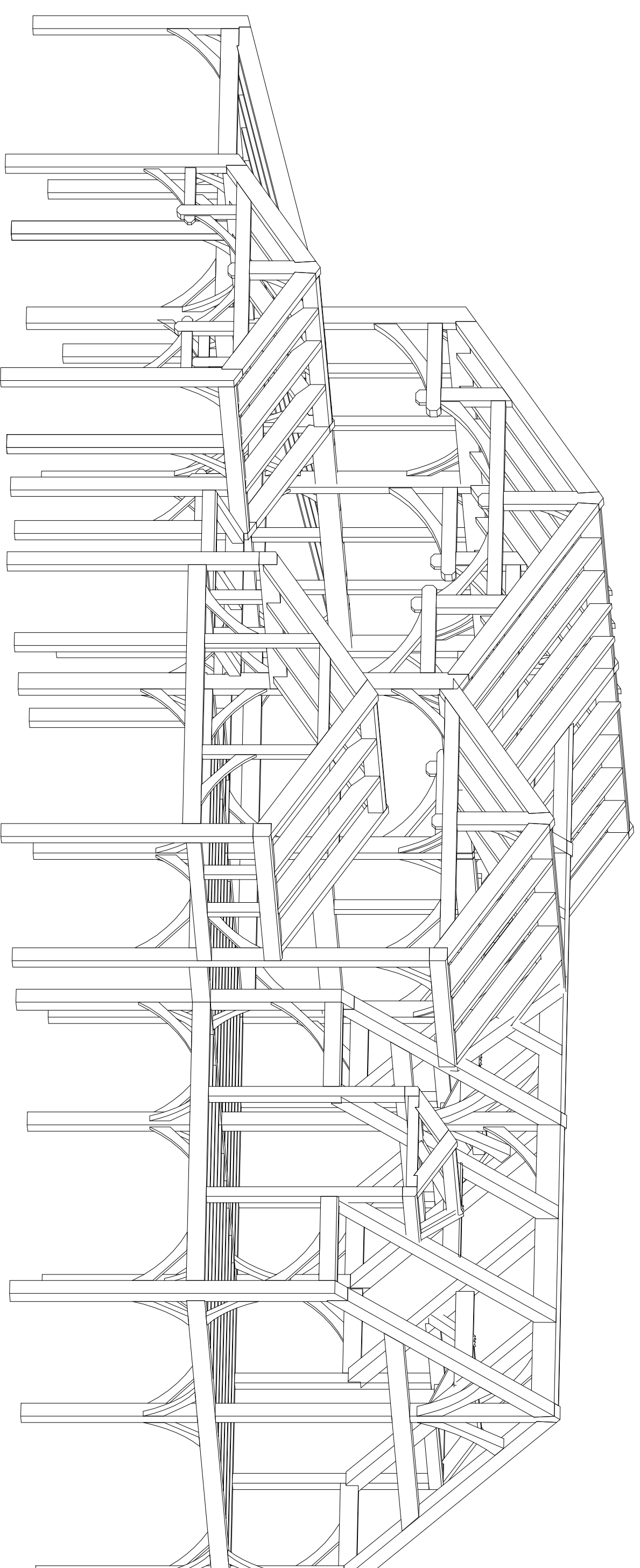
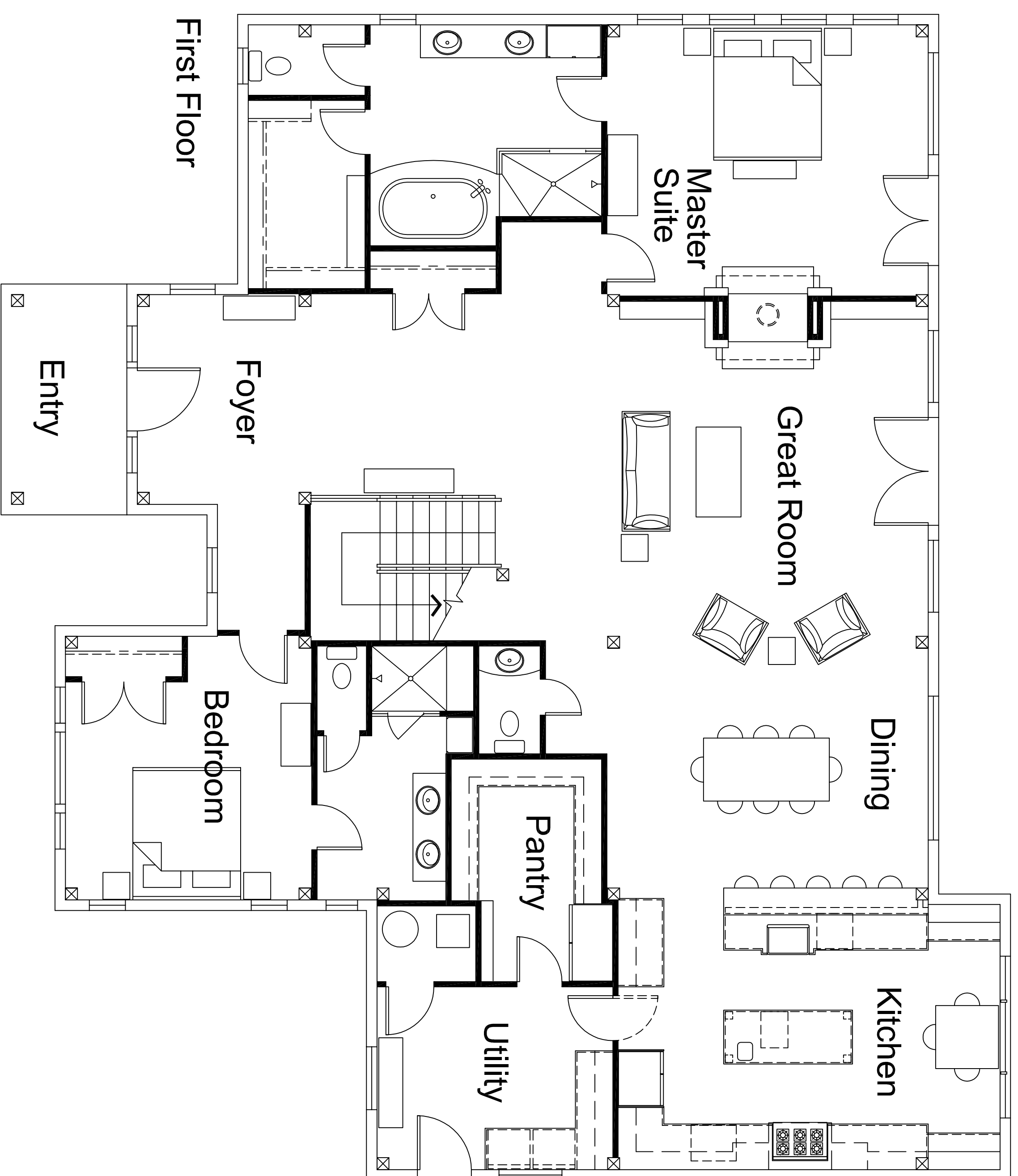
Additions: Timber Frame Entry, Gable Dormers, Hammerbeam Bents

First Floor: 2735 sq. ft.

Second Floor: 1737 sq. ft.

Entry: 90 sq. ft.

Total Area: 4562 sq. ft.



Wind River Timberframes

14374 County Road 35.6 | Mancos, Colorado 81328 | 970.882.2112
www.windriver-timberframes.com | alan @windriver-timberframes.com