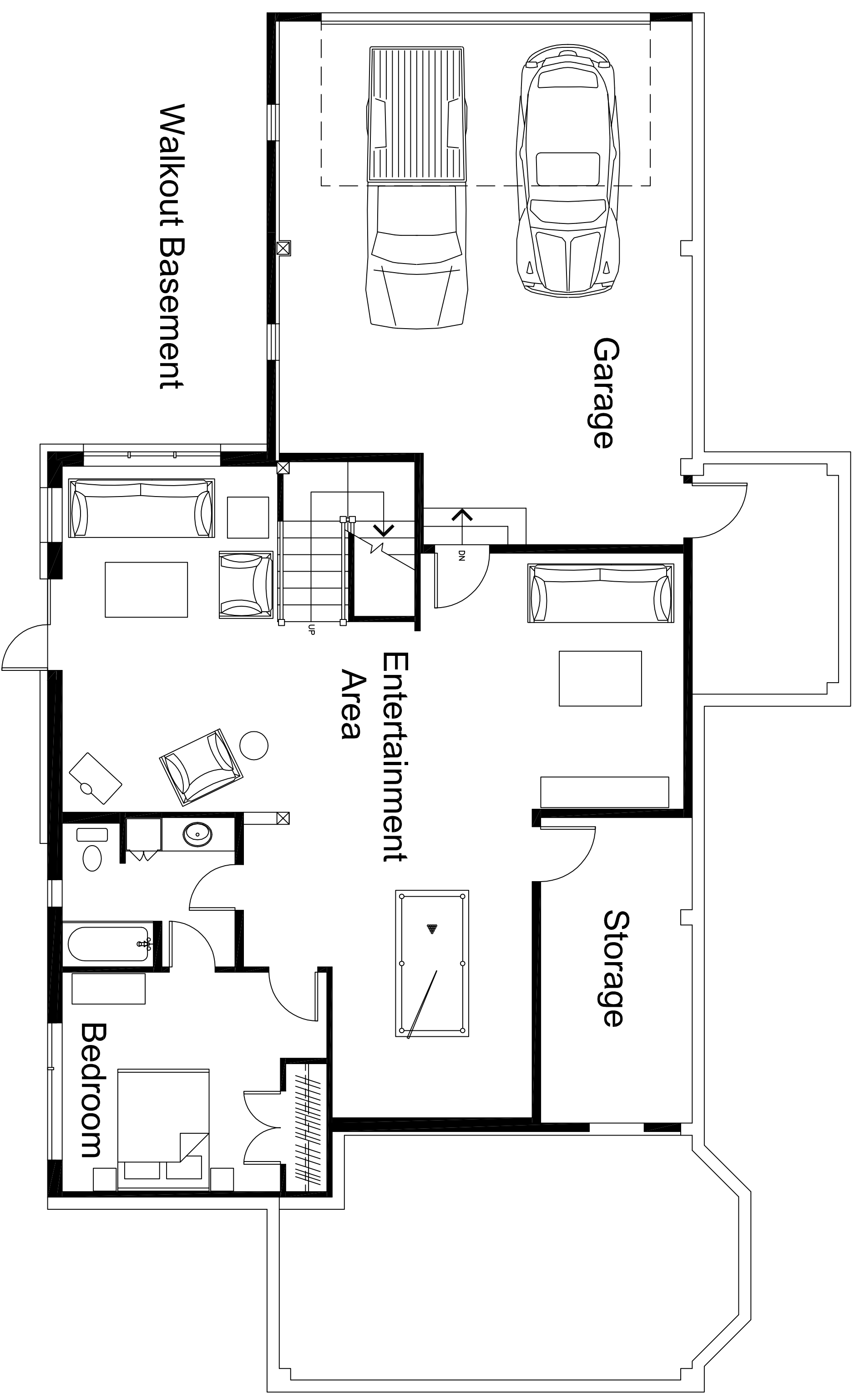


Main

Mancos

Additions: Timber Frame Entry, "Larson" Ridge
 Main: 2213 sq. ft.
 Basement: 1318 sq. ft.
 Garage: 700 sq. ft.
 Deck: 446 sq. ft.
 Entry: 110 sq. ft.
 Total Area: 4787 sq. ft.



Walkout Basement

Designed with Tyler Lapp - Blu Ink, Ltd. - Rico, Colorado

Wind River Timberframes

14374 County Road 35.6 | Mancos, Colorado 81328 | 970.882.2112
 www.windriver-timberframes.com | alan @windriver-timberframes.com