

Black Canyon

Additions: Timber Frame Entry,

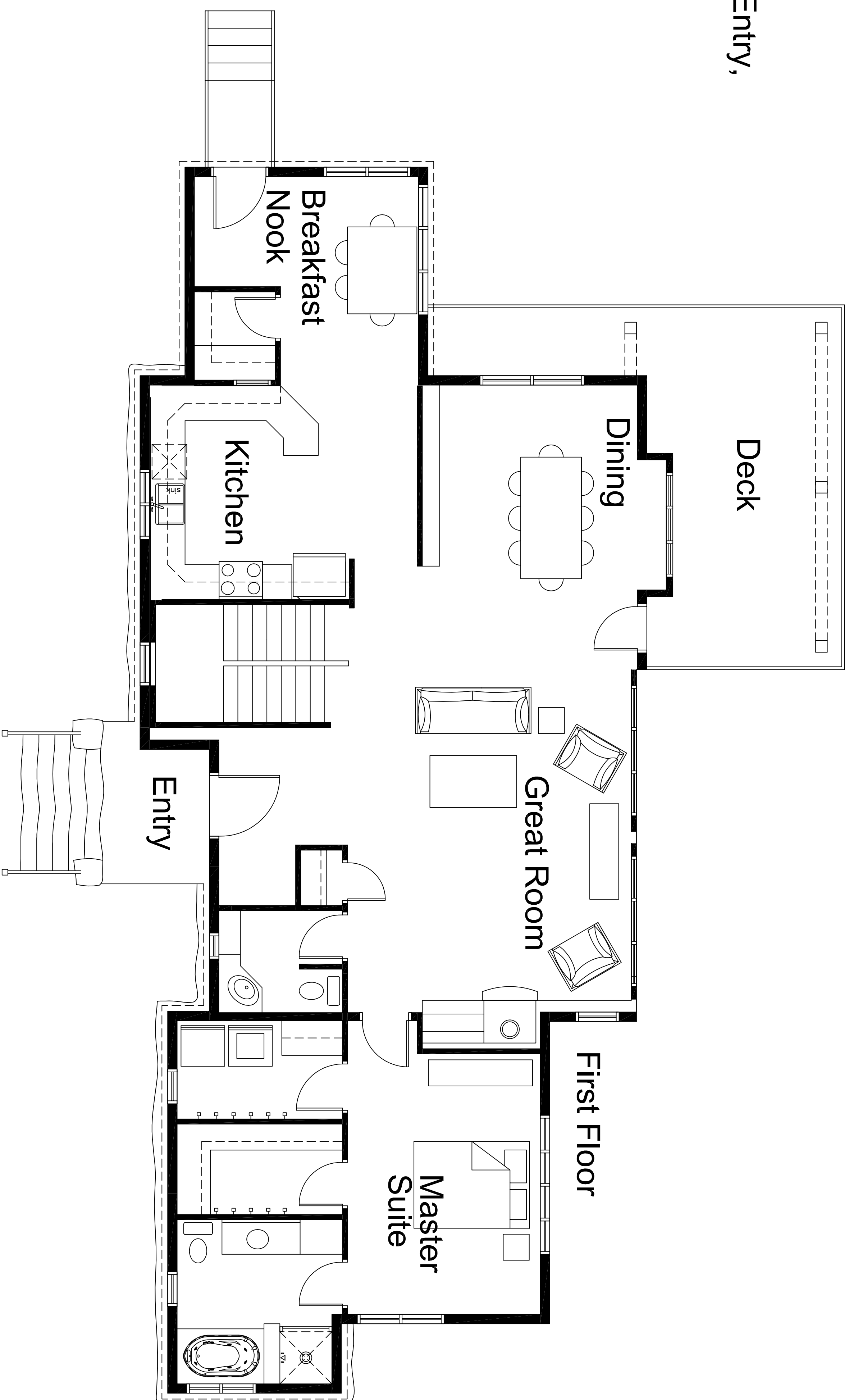
First Floor: 1615 sq. ft.

Second Floor: 968 sq. ft.

Deck: 275 sq. ft.

Entry: 65 sq. ft.

Total Area: 2923 sq. ft.



Wind River Timberframes

14374 County Road 35.6 | Mancos, Colorado 81328 | 970.882.2112
www.windriver-timberframes.com | alan @windriver-timberframes.com