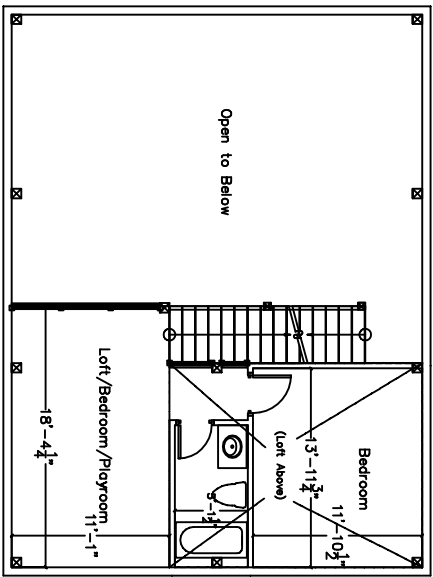
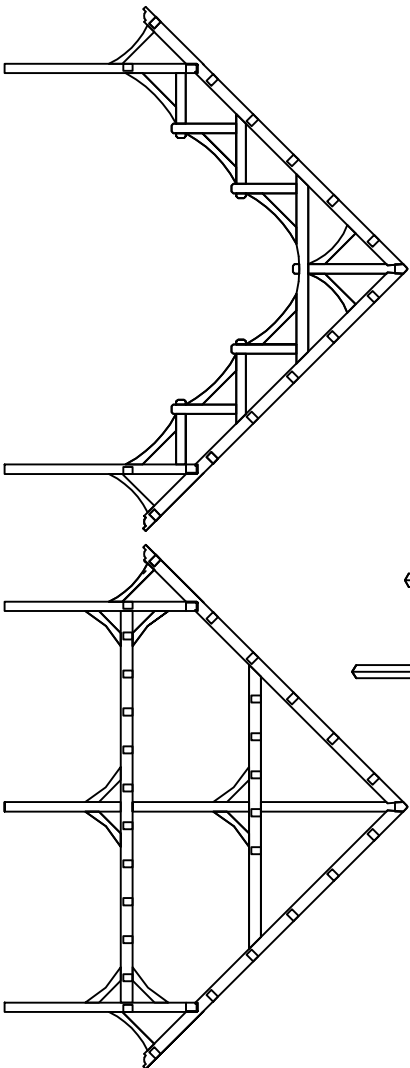
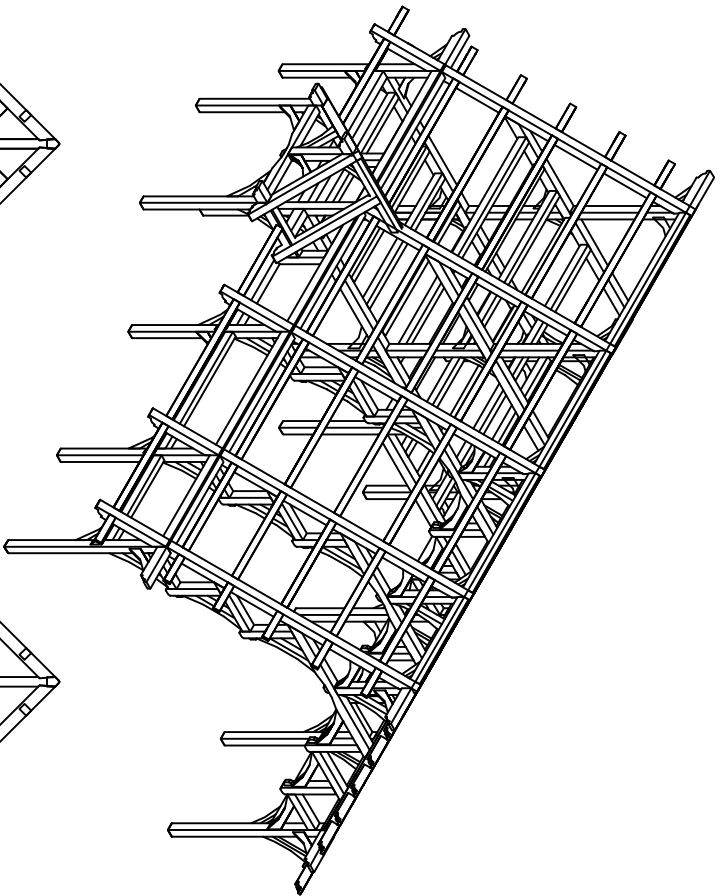


First Floor Plan



Second Floor Plan



Cache Valley

Frame Style: Mountain Cabin

Additions: Hammerbeams, Rafter and Plate Extensions for 5 Overhangs, Second and Third Story Lofts

First Floor: 1200

Second Floor: 489

Loft: 220

Front Porch: 250

Entry: 50

Total Timberframe: 2209

Wind River Timberframes

14374 County Road 35.6 * Mancos, Colorado 81328 * (970) 882-2112